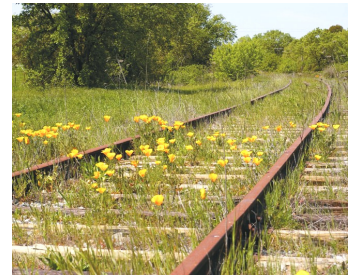




Central Valley Rails to Trails Foundation

Help Create a 27 Mile Trail!



The **Central Valley Rails To Trails Foundation (CVRTF)** was formed in the year 2000 by local Sacramento & San Joaquin County residents interested in preserving the Central California Traction Company (CCTC) rail corridor as a trail for non-motorized transportation. The Foundation provides educational services to local residents and public officials on the opportunities presented by converting local rails to trails. The non-profit Foundation has a 501 (c)(3) tax exempt status (Tax ID #94-3375724).

CVRTF is run by volunteers and funded by donations from community members, local businesses and foundations, primarily through support of the annual TrailFest event held at locations adjacent to the CCTC corridor. No special interests control the organization or serve as the main source of funding.

The proposed rail trail will provide the missing north/south connectivity between local and regional trails. Links are being planned at the north and south ends of the rail trail to provide access to downtown Sacramento, the American River Parkway and the Mokelumne Coast to Crest Trail.

CVRTF benefits from research and technical assistance provided by the California Field Office of the Rails-to-Trails Conservancy, which provides resources on best practices used by rail-trail planners across the nation.

Current Focus

- Acquisition and development of a 27.5-mile portion of the CCTC rail corridor between Elder Creek Road in Sacramento County and Woodbridge Road in San Joaquin County. Partnering with the Trust for Public Land has enabled CVRTF to take the first steps toward acquiring the corridor from its owners, Union Pacific and Burlington Northern/Santa Fe. Recently, the property was withdrawn from the market and is now being used to store unused rail cars. CVRTF is encouraging the owners to resume acquisition discussions.
- TrailFest is the annual event that supports CVRTF's operations. The 2009 event will take place on May 9th at the Hunter Stallion Station in Wilton. Tickets can be purchased on-line at www.cvrtof.org.
- Ongoing education and outreach to adjacent property owners and community members. CVRTF has conducted two surveys of property owners along the CCTC rail corridor, and received widespread support for the trail concept. A third survey will be conducted later this year. Monthly public meetings are held in Wilton (first Tuesday, 7-8 p.m. at the Wilton Fire Station) to provide community members with a forum to comment on the trail concept.

CVRTF has gained support from the Cities of Elk Grove and Galt, as well as the Cosumnes CSD, Cosumnes CPAC, Southgate Recreation & Park District, Western States Trail Foundation, Trust for Public Land, Cosumnes River Indian Association, South County Horsemen's Association, Wilton-Cosumnes Recreation Advisory Council, Florin Resource Conservation District, Sacramento Area Bicycle Advocates (SABA), Sacramento Wheelmen, Great Valley Center, Teichert Foundation, CA Dept. of Health Services Healthy Transportation Network, Breathe California of Sacramento Emigrant Trails, Mercy General Hospital, California Horsemen's Equestrian Trail Patrol, and hundreds of other community leaders, businesses and organizations.

Central Valley Rails to Trails Foundation

Post Office Box 12, Wilton, CA, 95693

E-mail: trail@cvrtof.org – Phone: 916.798.5629 – Web Site: www.cvrtof.org